

ATTACHMENT 1 THE SUBJECT SITE'S APPLICABLE PLANNING CONTROLS

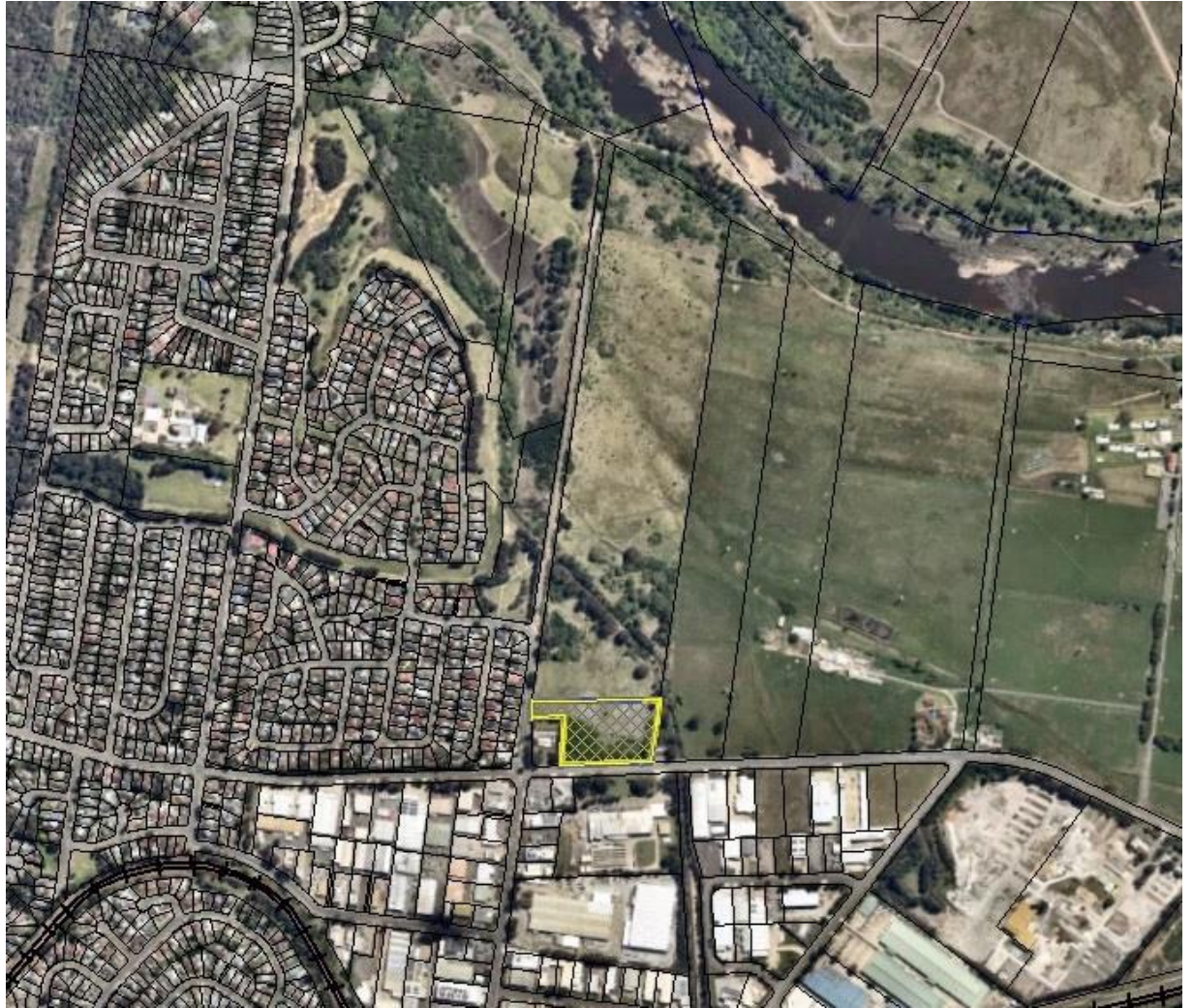
170 Russell Street, Emu Plains (Lot 1 DP 1273251). Previously known as 1-4 Old Bathurst Road, Emu Plains with adjacent land.

AERIAL PHOTO

Zoomed view

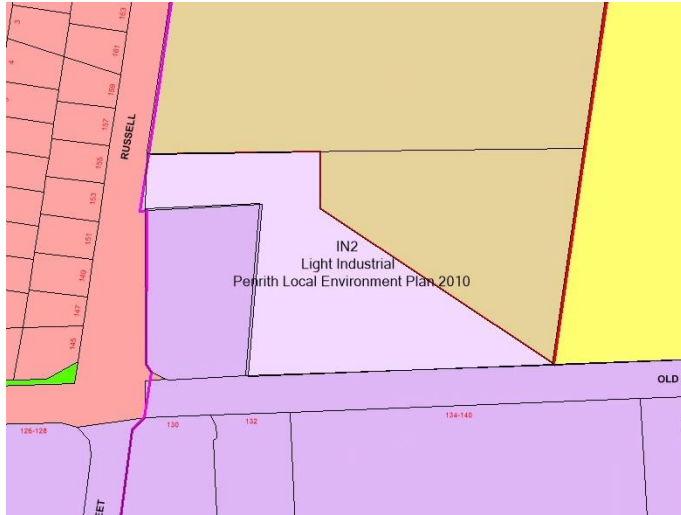


Wide view



LAND ZONING

Zoomed view



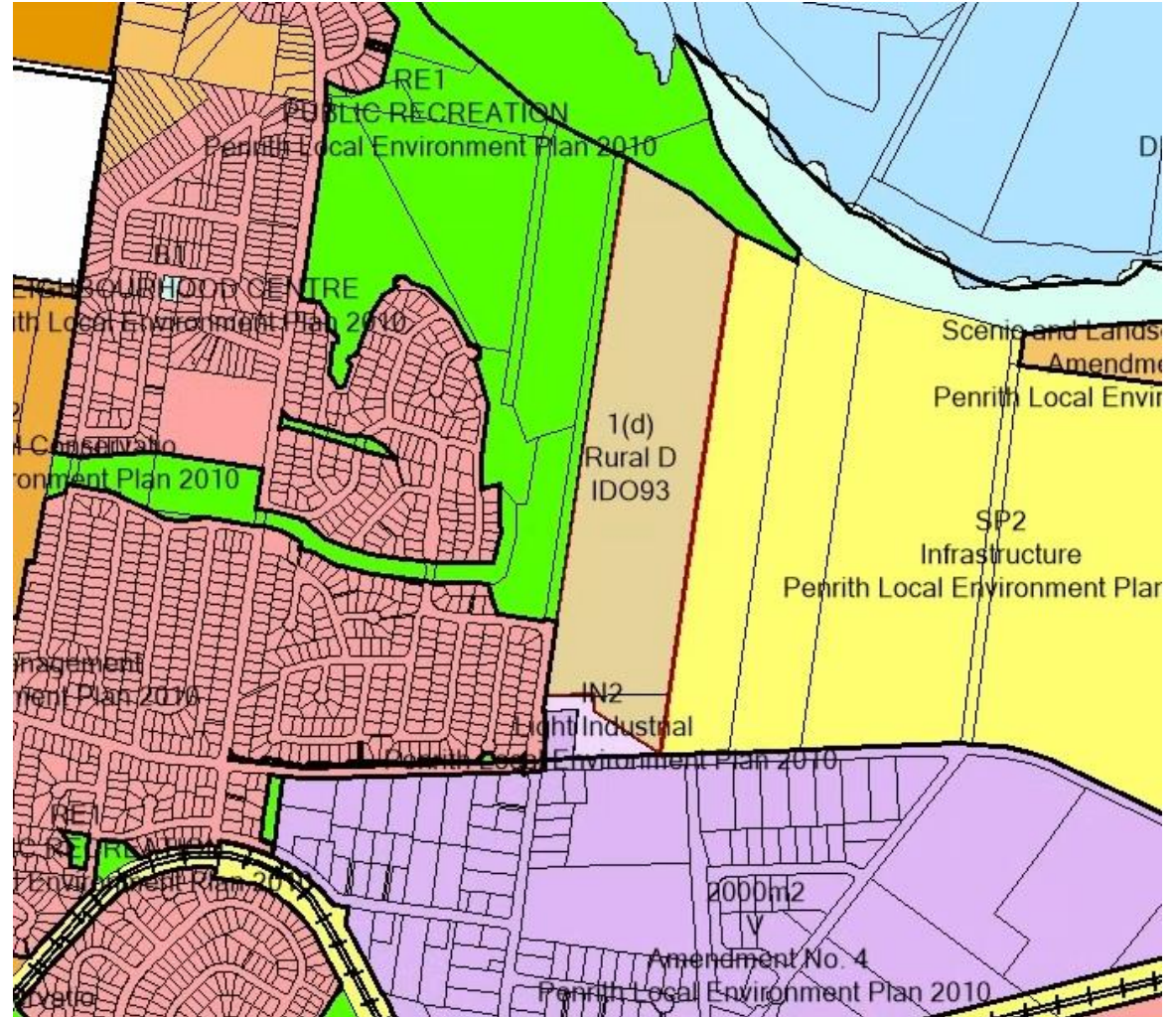
PENRITH LOCAL ENVIRONMENTAL PLAN 2010:

- part IN2 Light Industrial

PENRITH INTERIM DEVELOPMENT ORDER 93:

- part Rural 1(d) / RURAL 'D' (Future Urban)

Wide view



OTHER CONTROLS UNDER PENRITH LOCAL ENVIRONMENTAL PLAN 2010



Land Application Map: part "Deferred Matter"



Clause Application Map: Whole site is "Flood Planning Land"

